



Immersive Training Facility

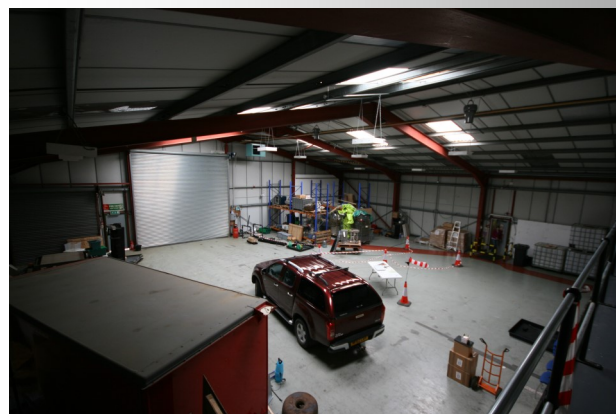


Our Immersive Training Facility in Evesham, Worcestershire, is now available for hire.

The unique areas of this fully equipped and enclosed building allow all weather and discrete training use. Multiple classrooms and meeting rooms, with capacity for 6 to 40 people, complement the scenario based areas. We also have a Laboratory for full training and awareness of chemical handling.

Fully Furnished Two Storey House.

Too many training courses do not reflect real world deployments. A typical lab setup at the back of a classroom does not prepare your team for attending an Illicit Drugs or Explosive Lab in a house or warehouse and the inherent restrictions and issues this brings.



Typical Scenarios.

- ◆ Illicit Drugs Lab
- ◆ Bedroom Cannabis Grow.
- ◆ Warehouse and Industrial Hazmat.
- ◆ Chemical Weapon lab.
- ◆ Explosives manufacture.
- ◆ Biothreat culturing.
- ◆ Forensic recovery.
- ◆ Dirty Bomb Factory.

All scenarios are easily reconfigured and many are based on actual case studies.

Please contact us for pricing and availability based upon your requirements



Scenarios & Classrooms

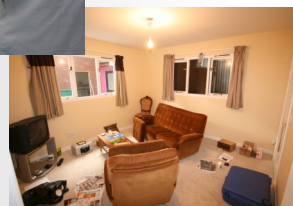
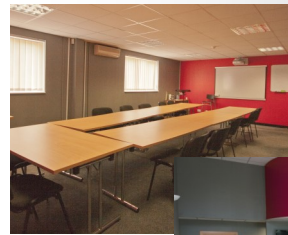


AV suite

- ◆ 40 Seater auditorium
- ◆ Seminars
- ◆ Desktop Exercises
- ◆ XVR Technology for Scenario projection

Training/Meeting Rooms

- ◆ For 6,10 and 20 people
- ◆ WhiteBoards and Flip Charts in all rooms
- ◆ Projection in Larger rooms
- ◆ Tea and Coffee/Lunch Area



Hire and Advice

To Supplement the Scenarios we can also supply

- ◆ Equipment
- ◆ Supervisory Personnel
- ◆ Consumables
- ◆ A Consultancy and Advisory Service

Please contact us for pricing and availability based upon your requirements